

How-To for Downloading

Microsoft Office 2007

(or 2003 if you so choose)

Contents

IMPORTANT LINKS.....	1
DOWNLOADING FROM AN OFF-CAMPUS LOCATION.....	2
DOWNLOADING THE SOFTWARE WITHOUT BURNING IT TO DISK.....	2

Important links

Campus Authorized Software (introduction and listing of software available):

<http://www.cc.ncku.edu.tw/~newcc/en/service/general/software.htm>

Office versions: <http://www.cc.ncku.edu.tw/download/office.htm> (make sure you select the right version you want - Chinese or English)

Software Keys: <http://www.cc.ncku.edu.tw/download/key.htm>

WinRar (if you do not already have it installed on your computer):

http://www.download.com/WinRAR/3000-2250_4-10007677.html. Download trial version for free.

Downloading from an off-campus location

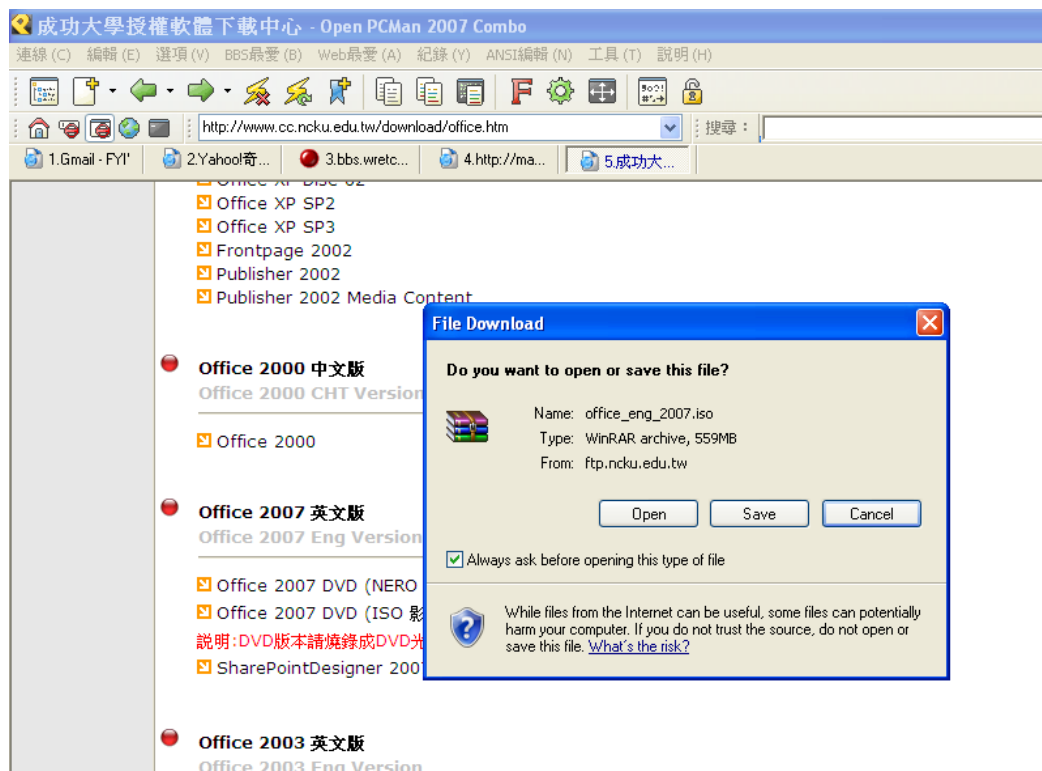
If you are downloading from an off-campus location, you will have to change your LAN settings:

Go: Tools --> Internet Options --> Connections --> LAN Settings --> (tick "proxy server") -
-> Address: rpa.lib.ncku.edu.tw --> Port: 3128

You will then have to enter your student number as the username, and your library password (tends to be the last four digits of your passport number).

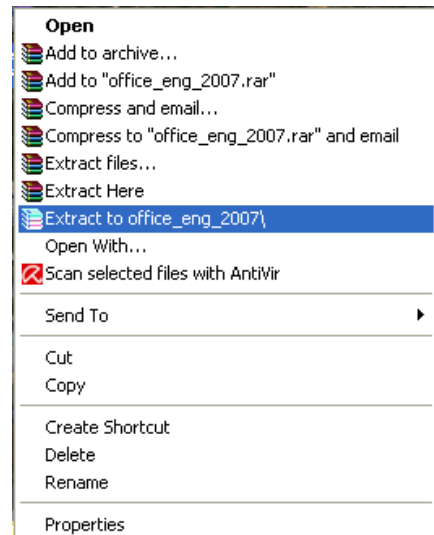
Downloading the software without burning it to disk

Go to <http://www.cc.ncku.edu.tw/download/office.htm>, select *Office 2007 DVD (ISO 影像檔)* under the *Office 2007 English* section [of course if you want Chinese version, select Chinese version]. The following should appear:



If it does not, and you are using i.e. Mozilla or such, try using *Internet Explorer* instead. If you do not have WinRAR, download it first (see link in above section).

Save the file to your desktop (this will take some time). If it saves to an *iso* file, right-click it once it has downloaded, and select *Extract to office_eng_2007* (if you do not have WinRAR, once again see *Links* section above).



Once extracted (this may take some time), open it and select the *setup.exe*. **Enter the key number for Office 2007 Suites (see Links section above)**, tick the *Accept* box (or equivalent), continue, and choose *Update* if you previously have MS Office on your computer (this will take some time). You will have to reboot your computer once finished to finalize the setup.

